



THE CURRENT

The Official Community Relations Newsletter of **Sem-Calaca Power Corporation** and **Southwest Luzon Power Generation Corporation**

Subsidiaries of Semirara Mining and Power Corporation

Volume 2 Issue 1 | January - March 2022



SCPC, SLPGC upscale Adopt-A-Forest Program

Over 10,000 seedlings of narra, molave, and mahogany were planted by SCPC and SLPGC at its adopted 50-hectare upland forest site at Barangay Patugo, Balayan, Batangas to surpass its annual 5,000 seedling target.

The program commenced during the rainy season and ensured

the greater survival of the planted trees. Additionally, we regularly disseminated information to the Department of Environment and Natural Resources-City Environment & Natural Resources Office (DENR-CENRO) to promote sustainable forest management and prevent slash-and-burn farming (kaingin)

methods. We also provided fruit-bearing tree seedlings to the community.

To ensure the continuing success of our sustainable *Adopt-A-Forest* program, we will upscale the adopted site by another 50 hectares and extend it to other areas, such as Mt. Makiling Forest Reserve.



Calaca Power Complex workforce conducts blood donation

PAHINA 4



Promoting gender equality in the workplace

PAHINA 5



Patuloy lumaban sa hamon ng buhay

PAHINA 10



Charlie V. Robles
Assistant Vice President
and Plant Manager,
SCPC

The role of women in our society has dramatically evolved over the course of a century—from being subjugated to an empowered force essential in the expansion of socio-economic growth and development. In many aspects of modern life, women are now enjoying full and equal participation.

Regardless of gender, employees at the SCPC and SLPGC are given equal opportunities based on their individual competencies and qualifications. Significantly, several jobs that used to be male-oriented—e.g. Maintenance, Operations, and Performance Group, are now being ventured and occupied by our female workforce.

At SCPC and SLPGC, we highly believe every employee plays a vital role as we transition into a modern and digitized company. We future-proof our workforce through continuous retooling programs aimed at honing their individual skills that are critical as we emerge in the wake of the pandemic.

As Plant Manager, I truly admire and appreciate our people’s commitment, their relentless effort in the pursuit of excellence. Please be reassured that SCPC and SLPGC will continue to be an equal-opportunity organization.

As we celebrate Women’s Month, let me extend my deepest gratitude and warmest greetings to all the women in SCPC and SLPGC, as this is the best time to acknowledge their invaluable contributions, not only to our organization, but also to Philippine society.

Thank you and more power!

“Leadership is the capacity to translate vision into reality.”

This quote was a source of inspiration when I first stepped into my current role. It reinforced my belief that aside from having the competency to fulfil duties and responsibilities, an effective leader influences and empowers those whom he leads.

To deliver and contribute results, I am constantly motivated in resolving the day-to-day operational challenges by employing critical and strategic thinking at work. As Plant Manager, I consciously keep in mind the insights given by colleagues during meetings and discussions. Their collective input allows me to arrive at informed and sound decisions.

I try to inspire and engage my team by encouraging them to think outside the box, to break out of their comfort zones in approaching problems, in the hopes of pulling out creative solutions by themselves. I found out that conversations, through regular coaching and mentoring, are effective in cultivating a mindset of excellence and commitment in individual members of my team. The knowledge transfer provided by these sessions also ensures that business continuity is in place.

Setting a sustainable, work-life balance can be quite challenging in our industry, but I truly believe its practice fosters genuine camaraderie and a culture of trust among the team by making our people feel valued and in the long run, improve their work performance.



Noel N. Salamat
Plant Manager,
SLPGC



REPUBLIC OF THE PHILIPPINES
DEPARTMENT OF ENERGY



SEM-CALACA POWER CORPORATION



SOUTHWEST LUZON
Power Generation Corporation

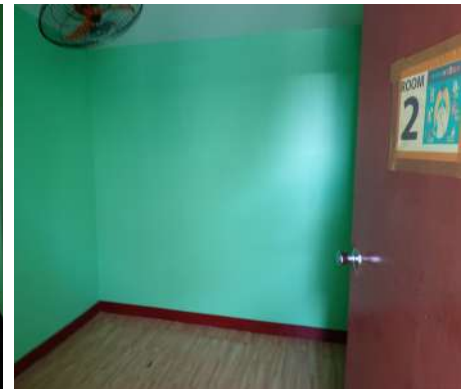
THE CURRENT is the official community relations newsletter of Sem-Calaca Power Corporation (SCPC) and Southwest Luzon Power Generation Corporation (SLPGC) published quarterly. Its main office is located at Barangay San Rafael, Calaca, Batangas 4212. For concerns, please contact us at 09171003876 or email to communityrelations@semcalaca.com or communityrelations.cpc2021@gmail.com

Editorial Adviser **Denel C. Mateo**
 Editor in Chief **Edgardo V. Araya**
 Managing Editor **Portia M. Vizconde**
 Associate Editor **Rafael L. Antonio**
 Editorial Assistant **Katlyn B. Panganiban** and **Vincent M. Humarang**
 Layout & Design **Kenneth James G. Ang**

Dacanlao opens new isolation facility

Barangay Dacanlao inaugurated its new 6-door isolation facility on March 1, 2022, to boost its COVID-19 prevention measures.

The project was part of the Barangay Annual Work Program on pandemic health emergency, funded through the DOE ER 1-94 remitted by SCPC and SLPGC.





Calaca Power Complex workforce conduct blood donation

SCPC and SLPGC employees and contractors of Calaca Power Complex conducted blood donation activity on February 15, 2022, in partnership with Batangas Medical Center.

Over 60 blood donors participated in the activity which is part of our employee engagement program on emergency preparedness and resilience.





Promoting gender equality in the workplace



Isidro A. Consunji
SMPC Chairman and CEO

“While our businesses belong to male-dominated industries, we do not distinguish roles and opportunities

according to gender. We empower and promote people based on their individual merits and contributions to the organization.”



Roselle S. Aquino
SCPC Purchaser, Supply Chain Management

“SMPC recognizes women’s potential in reaching departmental goals and targets. I am privileged to be part

of a company that provides a vast opportunity for both men and women in terms of professional growth.”



Nikka Macatangay
SCPC Environmental Supervisor

“We may be dominated in terms of numbers, but our contribution to this company is not

outnumbered. Let’s continue to learn and exercise our capabilities towards self-growth.”



Jessica V. Lopez
SLPGC Finance and Accounting Assistant

“Society has already acknowledged the value and contribution of women in every industry. We should continue

to be accountable no matter what positions we hold and excel in the path we choose. Success has no gender. So keep believing that as we learn how to follow, there’s no doubt we can also lead.



Jennylyn M. Garin
SLPGC Planning Engineer

“Do not be discouraged just because you are a woman, do not be afraid just because you think you are weak.

Love and appreciate yourself. Do not be afraid to try because soon you will discover ‘kaya ko pala ‘to.’ Don’t come to the point that you will regret everything just because you refuse, and you never tried.”

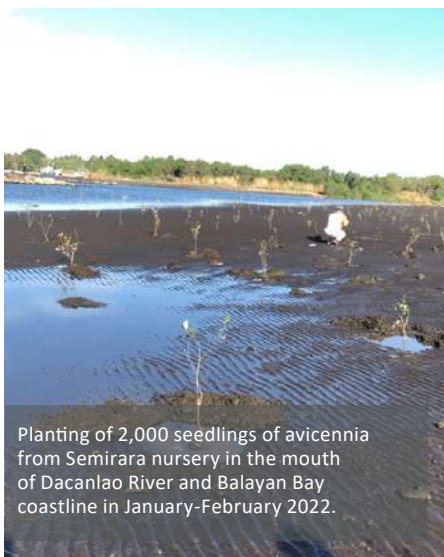
At SMPC, we value both the people we work with and the people we work for. In our value chain, we ensure that our employees and workers contribute within an environment that promotes their growth and development without compromising their safety and dignity.

SMPC has been distinguished anew as among the four Filipino companies cited in the 2022 Bloomberg Gender Equality Index which includes 418 companies across 45 countries and regions.

Environmental Stev



Continuous clean up drive at Dacanlao River and Cawong River in January-February 2022 as part of our adopted river water bodies.



Planting of 2,000 seedlings of avicennia from Semirara nursery in the mouth of Dacanlao River and Balayan Bay coastline in January-February 2022.



Erection of watch tower at the Marine Protected Area in Barangay Carenahan, Balayan to secure the surroundings of the Carenahan Fish Sanctuary and Fish Reserve. This will aid our stakeholders from Bantay Dagat of LGU-Balayan to have a decent area to stay and observe during their duty.



Wardship Activities



In celebration of World Wildlife Day on March 3, 2022, SCPC and SLPGC representatives witnessed the release of two grass owlets by the DENR-Regional Wildlife Rescue Center at Barangay Subic Ibaba, Agoncillo, Batangas. The owlets were found within CPC Employee Housing last December and were turned over to DENR-RWRC for appropriate care.



Deployment of buoy/flotation markers on February 28, 2022, to secure the Marine Protected Areas of the Carenahan Fish Sanctuary and Fish Reserve, where fishing and collecting are prohibited and against the law.

Health lecture at Brgy. Quizumbing

SCPC and SLPGC conducted their regular health lecture activity to their impact communities to spread awareness on certain health issues.

Barangay health workers from Quizumbing were imparted knowledge on common heart diseases that can be useful in fulfilling their duties to the residents of the barangay.



Getting vaccinated can help protect you and those around you from Covid-19.

New data shows that Covid-19 vaccines help to stop you picking up the virus and spreading it to others. Your decision to get vaccinated helps others, too.

This protection is not 100%; continue to take precautions to protect yourself, friends, and your family, even after vaccination.



Vaccines are working very well to protect against severe illness, hospitalizations, and death, but effectiveness against infection decreases over time.



Boosters increase your protection from COVID-19, including variants.



The Delta and Omicron variants spreads more easily than the original virus strain.



Source: CDC, WHO

Benefits of Covid-19 Booster Shot

Isa sa mga magagandang nangyari sa buhay ko ay nung makatapos ako ng pag-aaral sa kolehiyo at naging isang ganap na Inhinyero. Dahil dito, unti-unti kong naiaahon ang pamilya ko sa kahirapan at nabibigyan sila ng magandang buhay.

Napakalaking hamon sa buhay ang lumalaki ka na ang tanging pinanghahawakan mo para makaahon sa hirap ay ang makatapos ng pag-aaral. Naging posible ang lahat ng ito simula nang mapili ako bilang isa sa mga scholars ng SCPC noong 2012. Ito ang naging daan upang ang aking dating pangarap lang ay aking matupad at mabigyang buhay.

Isa, dalawa...limang taon na pagsusumikap at pagtitiyaga ang aking ginawa para lamang hindi mawala ang scholarship na ipinagkaloob sa akin. Dugo, pawis, pagluha, at pagpupuyat ang iginugol para lamang makatapos at maabot ang inaasam na tagumpay.

Lakas ng loob, sipag at pagtitiwala sa Panginoon ang aking naging baon para mapanatili ko ang pasadong grado na siyang kailangan para magtuluy-tuloy ang aking pag-aaral. Sa loob ng limang taon, nandiyan ang napakalaking tulong ng SCPC scholarship na siyang tumugon sa lahat ng aking pangangailangan, samahan pa ng pananampalataya sa Panginoon upang maka-graduate at maihanda ang sarili patungo sa board exam.

Matapos ang limang taon na pagsusumikap, nakapasa ako ng board exam taong 2017 at naging isang ganap na “engineer.” Buhat noon, hindi pa din ako pinabayaan ni SCPC at sila pa din ang naging daan upang magkaroon



Patuloy lumaban sa hamon ng buhay

Ni Engr. Ray Anthony Casal
SCPC Planning & Scheduling Engineer

agad ako ng trabaho. Nagsimula ako bilang isang Cadet Engineer sa loob ng sampung buwan, pagkatapos noon bilang isang Outage Engineer naman. Sa kasalukuyan, kabilang ako sa mga regular na empleyado dito sa SCPC bilang isang Planning and Scheduling Engineer.

Lubos akong nagpapasalamat sa mga taong naging parte ng aking tagumpay na ito simula sa mga taong nagdala sa akin para maging isa sa mga SCPC scholars hanggang sa mga taong tumulong upang maabot ang kung anong meron ako ngayon.

Masasabi kong answered prayer

“Nandiyan ang napakalaking tulong ng SCPC scholarship na siyang tumugon sa lahat ng aking pangangailangan, samahan pa ng pananampalataya sa Panginoon...”

lahat ng meron ako ngayon at isa ang SCPC scholarship sa malaking biyaya na pinagkaloob sa akin ng Panginoon upang mabigyang kulay at maging posible ang pag-abot ko sa inaasam-asam kong pangarap.

BE ONE OF OUR SCHOLARS!

SCPC and SLPGC provide scholarship grants to THIRD, FOURTH, and FIFTH-year students specially those with remarkable performances on their studies, but their current status has difficulty sustaining their monthly miscellaneous expenses.

Recipients of scholarship grants must study at a state university that offers acceptable full-credit bachelor's degree preferably in Engineering or Chemistry (EE, ECE, IE, Mining Engineering, Chemistry).

Criteria for scholarship grants may include, but are not limited to, the following:

- Prior academic performance report card with a general weighted average of 85% (2.00) and above with no grade lower

than 80% (2.50);

- Performance of each applicant on tests designed to measure ability and aptitude for educational work (IQ test, aptitude test, and other psychological assessments);

- Recommendations from the school/teacher of the applicant's capabilities (e.g., good moral character and school's or barangay's endorsement for scholarship);

- Background investigation report which includes biographical information, academic performance, parent/family's financial or employment status, and other relevant experiences; and

- Interview results from the selection committee's conclusions as to the applicant's motivation, character, ability, or potential.

Interested applicants may submit or email their copy of grades for the last 4 semesters (first and second year) to communityrelations@semcalaca.com

We minimize our environmental impacts through responsible management of emissions and plant effluents monitoring. We conduct various monitoring activities regularly, all of which are routinely checked by the Department of Environment and Natural Resources (DENR). These quarterly monitoring activities are done with a DENR- accredited third-party consultant and results of which are validated through a separate Multi-partite Monitoring Team (MMT) validation activity.

Plant Effluents Monitoring

Station	Plant Effluents						
	Temperature, °C	pH	TSS, mg/L	Oil & Grease, mg/L	Phosphate, mg/L	Boron, mg/L	COD, mg/L
SCPC							
Condenser Outlet 1	32	7.5	5	<1.0	0.04	5.27	137
Condenser Outlet 2	-	-	-	-	-	-	-
SCPC Outfall Discharge	32	7.8	5	1.1	0.03	3.63	163
SLPGC							
Condenser Outlet 3A	33	8	2	<1.0	0.02	6.13	142
Condenser Outlet 3B	33	8	1	<1.0	<0.01	5.72	129
Condenser Outlet 4A	33	8	1	<1.0	0.02	4.49	122
Condenser Outlet 4B	33	7.9	2	<1.0	0.01	5.31	137
SLPGC Outfall Discharge	32	8	3	<1.0	0.02	5.92	148
Common Outfall Discharge	33	8	2	<1.0	0.04	4.01	151
DENR Standard	3 ^b	6.0-9.0	100	10	4 ^a	25 ^c	200

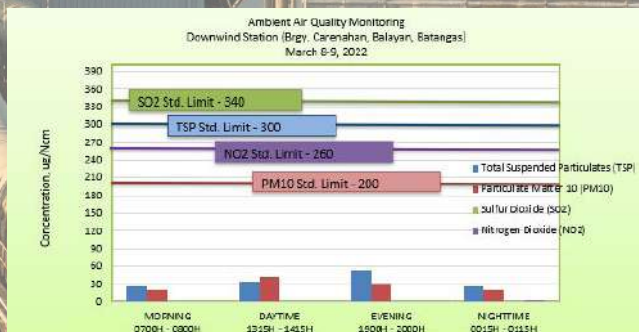
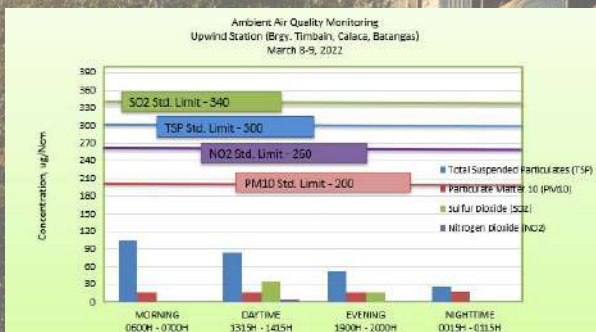
Notes: Plant effluent quality monitoring results are within DAO 2016-08 General Effluent Standards and DAO 2021-19 Effluent Standards, Class SC. Source of Condenser Outlets, Outfall Discharge and Common Outfall Discharge are all marine (sea) water. Condenser Outlet 2 is on shutdown at the time of sampling.

Ambient Air Quality Monitoring

Ambient Noise Quality Monitoring Results				
March 8-9, 2022				
Station	Morning	Daytime	Evening	Nighttime
In Front of South Bay Terminal	60	60	57	48
Outside Gate 1	60	61	60	50
Intersection going to SLPGC	60	62	59	49
Dacanáao Highway	61	64	61	53
In front of Mr. M. Secreto's House	60	63	60	59
In front of Mr. A. Valencia's House	60	64	61	52
Water Intake, before Dacanlao Bri	50	63	60	53
In front of SLPGC Water Intake	59	60	60	52
NPPCC Standard, Class D	70 dBA	75 dBA	70 dBA	65 dBA

Upwind Station (Brgy. Timbain, Calaca, Batangas)					
PARAMETERS	MORNING 0600H - 0700H	DAYTIME 1315H - 1415H	EVENING 1900H - 2000H	NIGHTTIME 0015H - 0115H	DENR Limit ug/Ncm
Sulfur Dioxide (SO ₂)	<7	35	17	<7	340
Nitrogen Dioxide (NO ₂)	<1	3	<1	<1	260
Total Suspended Particulates (TSP)	105	84	54	25	300
Particulate Matter 10 (PM ₁₀)	17	16	17	19	200

Downwind Station (Brgy. Carenahan, Balayan, Batangas)					
PARAMETERS	MORNING 0700H - 0800H	DAYTIME 1315H - 1415H	EVENING 1900H - 2000H	NIGHTTIME 0015H - 0115H	DENR Limit ug/Ncm
Sulfur Dioxide (SO ₂)	<7	<7	<7	<7	340
Nitrogen Dioxide (NO ₂)	<1	<1	<1	3	260
Total Suspended Particulates (TSP)	25	34	53	26	300
Particulate Matter 10 (PM ₁₀)	21	42	31	21	200





EMPLOYMENT

**EMERGENCY PREPAREDNESS
AND RESILIENCE**

EDUCATION

ENVIRONMENTAL STEWARDSHIP

ENERGY

ECONOMIC EMPOWERMENT



**SEMIRARA
MINING & POWER
CORPORATION**

25
1997-2022

As a leading vertically integrated energy company, we seek sustainable solutions that can provide communities inclusive growth in key aspects of their economic, environmental, and social requirements and aspirations.